

April 2026

# SSI Logan Hub



**SSI** For equality  
of life.

# About the Hub

**SSI and the Queensland Government have co-invested in a flagship community hub opening mid-2026.**

This isn't just another facility. It's a catalyst for economic transformation where impact-driven organisations amplify opportunities alongside Logan's thriving community.

This community co-designed hub brings together employers, educators, innovators, and community organisations to unlock potential in Logan's diverse, fast-growing population.

For partners, this means aligning business success with community impact. Whether you focus on youth empowerment, workforce development, community wellbeing, or innovation, we're seeking visionary partners ready to share space and multiply outcomes.

From collaborative funding to skilled workforce pipelines, join Logan's economic transformation while scaling your social mission.



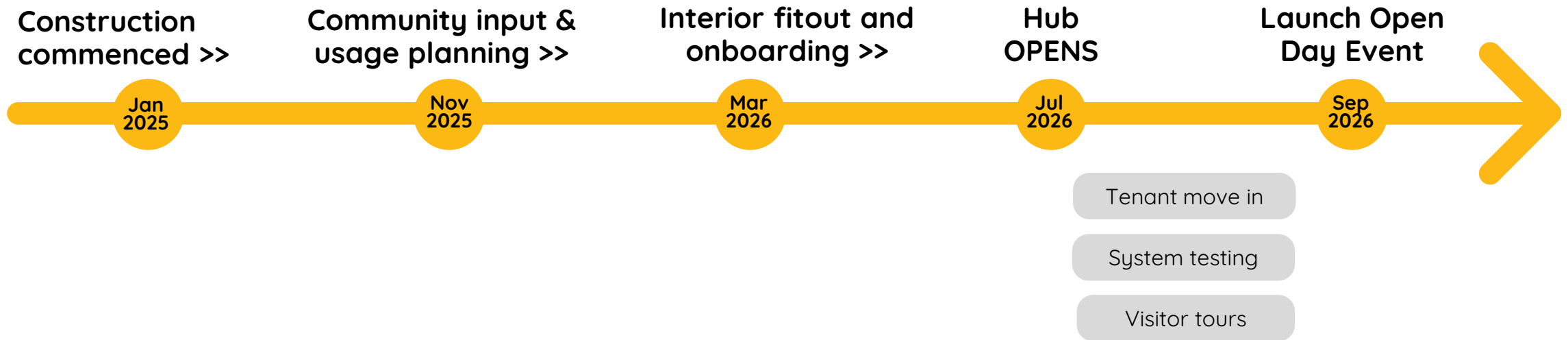
# Snapshot

## SSI Logan Hub

2 Carmody Street, Logan Central

- 2600sqm community infrastructure over four levels
- Close to Woodbridge station
- Multi-purpose economic hub with a mix of event, training, meeting and office spaces available
- Disability accessible
- Children's Activity Space for parents accessing hub services

# Timeline



Ready to explore opportunities?

# Logan Hub



Connecting community to opportunities

L3

Tenant floor: SSI tenancy (L3)

L2

Tenant floor (L2)- available for lease

L1

Mix used community floors

(LG and L1)

- ▶ You are welcome
- ▶ We are here to help
- ▶ No wrong door
- ▶ Pathway to economic participation

GL

# Hub vision and value

## Integrated community and employment hub that connects:

- Capability & skills development, training, and digital inclusion
- Employment pathways and employer engagement
- Enterprise and entrepreneurship support
- Health, wellbeing, settlement, counselling wrap-around services
- Service connections- streamlined navigation of government programs

## Unique Value Proposition:

- Building integrated pathways for Logan community
- Designed with community for community
- Share the space, share the impact



# Strategic opportunity

## Workforce opportunity

- Access to a diverse, skilled, and job-ready talent pool, directly addressing skills shortages in industries like health, aged care, logistics, and construction.
- Investment helps reduce youth unemployment and disengagement in Logan, which has one of the highest youth unemployment rates in Australia.
- By backing wrap-around supports (mental health, financial literacy, wellbeing), partners show they are addressing systemic barriers, not just creating jobs.

## Social impact

- Directly connect your brand with positive change in Logan which is endorsed by State and Local governments.
- The Hub will track outcomes (employment rates, training completions, enterprise starts, wellbeing indicators) and provide impact reports to sponsors/partners.
- Partners can publicly report their support as part of ESG disclosures, with clear evidence of social and economic impact

## Reputational commitment

- Partnering with the Hub demonstrates commitment to ethical practices, local workforce development, and community engagement.
- For every \$1 invested, partners are creating pathways that reduce welfare dependency, improve health and wellbeing, and build intergenerational resilience in one of QLD's fastest-growing regions.

## Ecosystem & business growth

- Unlock cross-sector collaborations with corporates, SMEs, social enterprises, and community organisations in one place.
- Connect with new customer bases, diversify supply chains, and pilot products or services in a live community environment.
- Be part of something bigger!

# Integrated visitor pathways

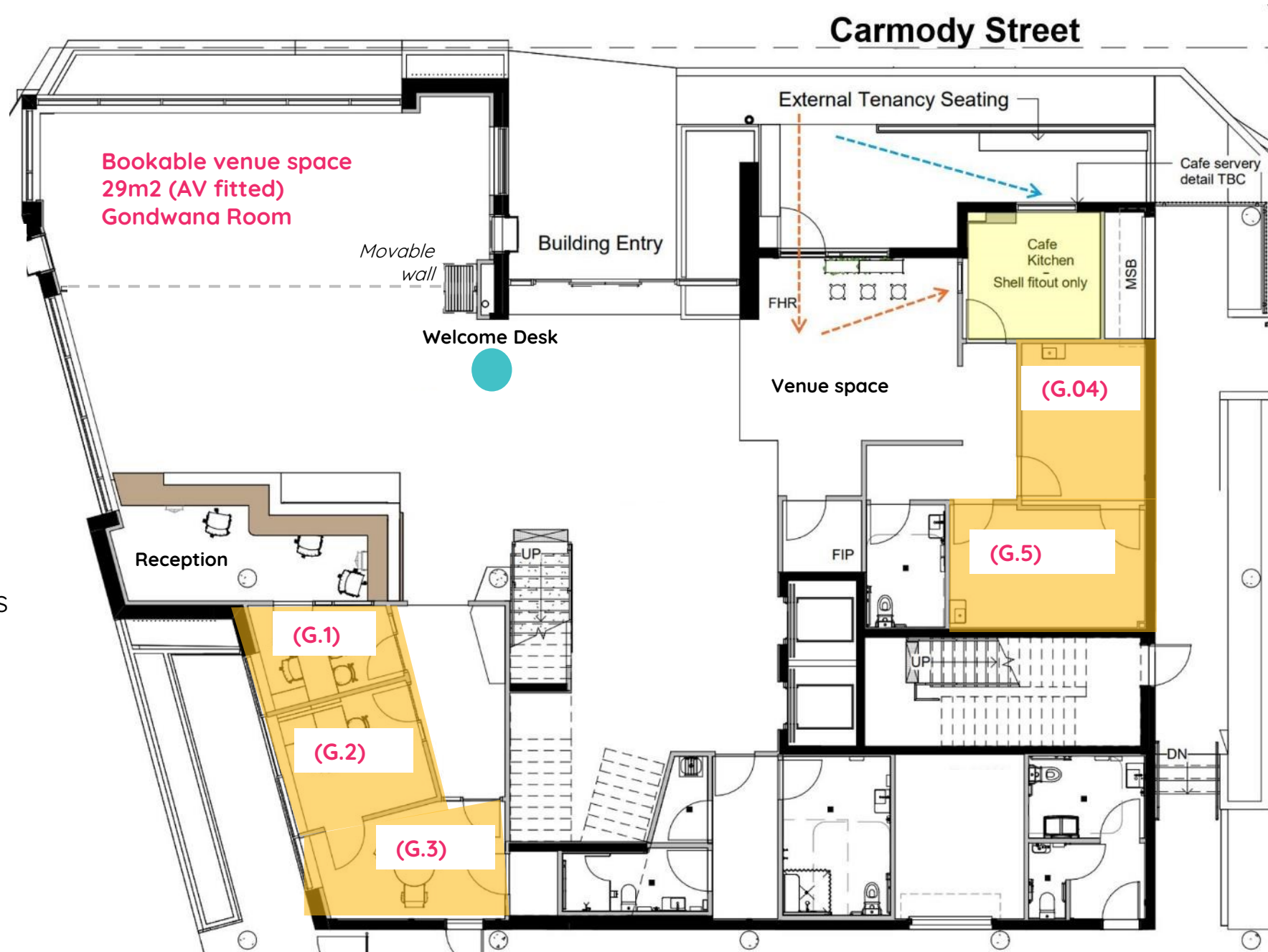
Awareness >>	Welcome >>	Learn >>	Engagement >>		Employment >>
Direct via SSI programs, marketing and communications	Enter warm and welcoming space that reflects community, both youth and multicultural themes.	Digital board shows hub activities on the day and coming up.	<b>Employment &amp; Training</b> programs that prepare talent for local needs	<b>Community</b> develop activities in the hub with their community for their community	Volunteering opportunities
Via service providers who provide training and programs	Greeted by friendly concierge, youth greeting youth. Cultural welcome, orientation tours.	Community board and information area for casual browsing.	Multi purpose, flexible spaces to meet, screen, interview, onboard job seekers.	Workshops, roundtables, forums in community	Traineeships, either in hub or with café, or pathways to service providers
Via council who promote activity at the hub	No wrong door, everyone can be welcome and then connected or directed to what they need.	Client pathways meet and greet, tour around hub. Navigators available: health, employment, services	Leverage co-working space to mentor, partner or incubate ideas.	After hours and weekend community group use	Apprenticeship preparation and transition to tangible job opportunities
Via community groups	Multi functional spaces for informal visitors that create a sense of belonging	Expos, info sessions, open days	Skills navigators to walk through skills recognition.	Access to maternity hubs, DV support, counselling and mental health support	Programs that transition people from training to employment.
Via expos and community open days	MSOs available and multi language support on arrival	Cross navigation and promotion/ referrals between service providers.	Programs such as driver training, and sector focused programs like health and hospital pathways (eg)	Ability to receive support with childcare to attend training	Expand employment supports to other family and community members

**Trauma informed >> culturally appropriate >> youth led >> future focused >> multi purpose >> safe.**

# Ground level

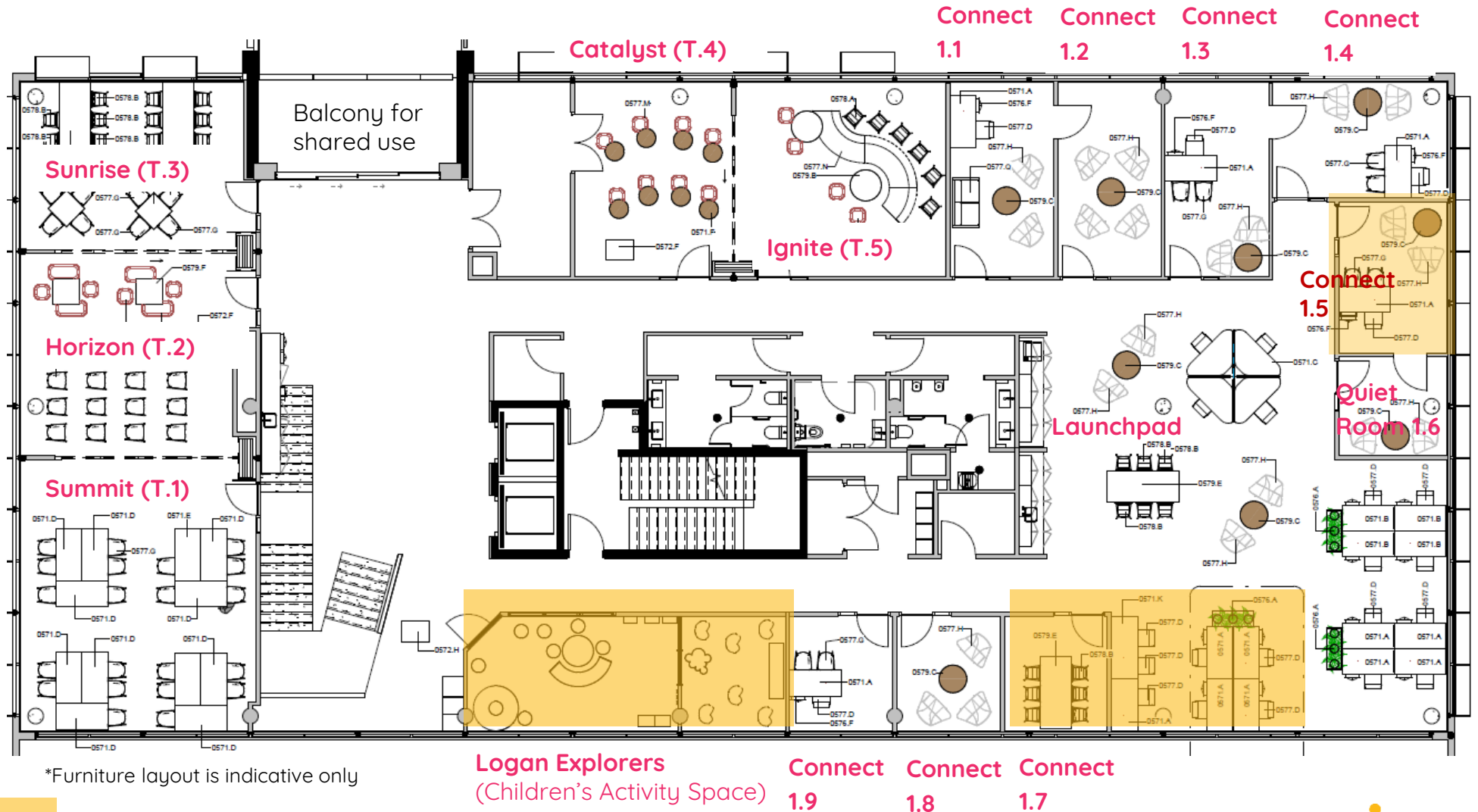
- Entrance, and ground floor co-designed with community
- Mix of formal and informal spaces
- Cafe
- Casual indoor and outdoor seating
- Information directory and what's on screens
- Welcome navigators to connect visitors with the service and support they need.

Indicates space is already tenanted



# Level 1

- Flexible use and configurable training spaces (x5)
- Informal and formal break out areas (x2)
- Collaboration and study spaces (x16)
- Mix of smaller and larger mentoring, consult meeting rooms (x6)
- Children's Activity Space for parents accessing hub services (x1)

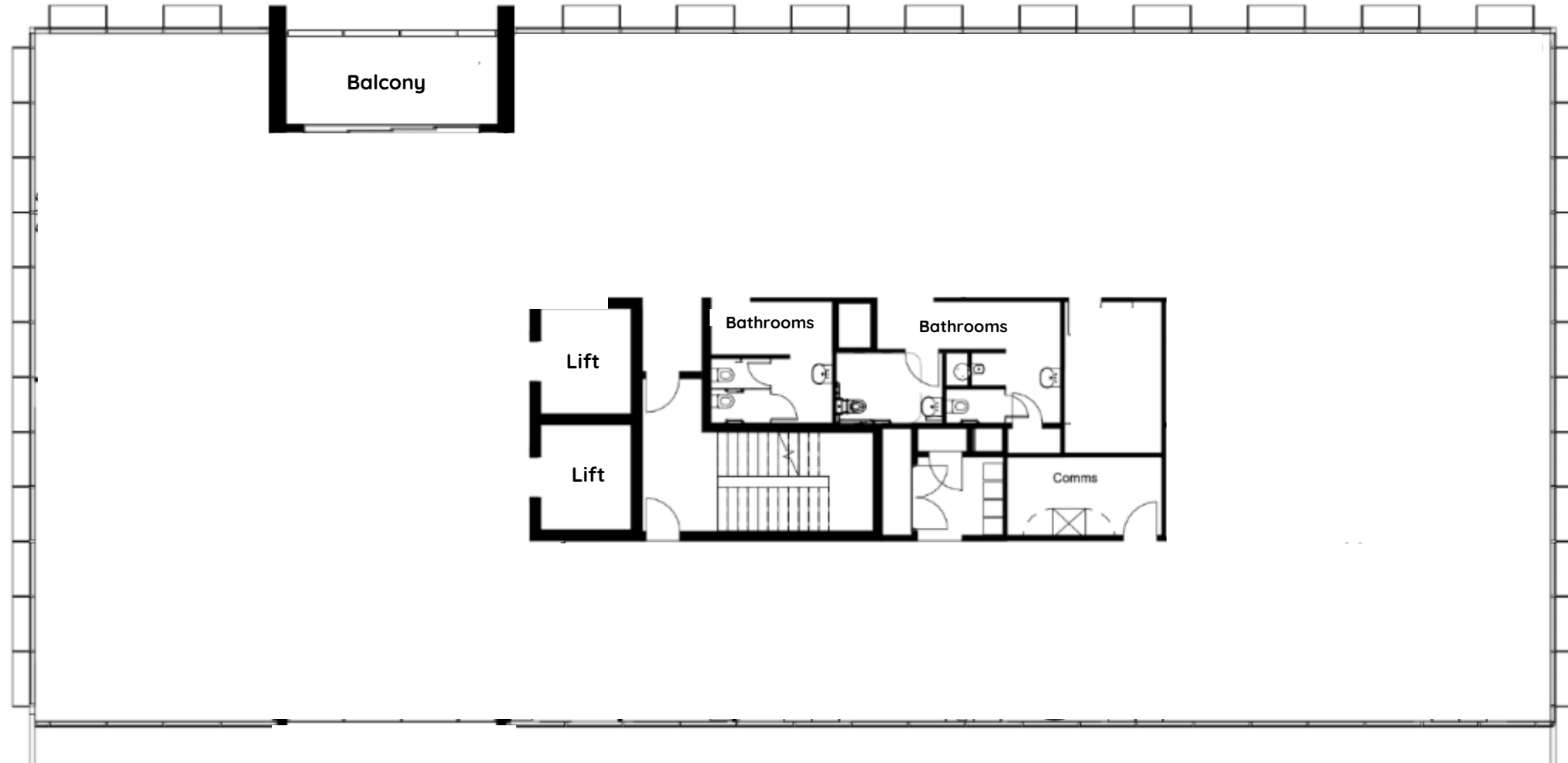


\*Furniture layout is indicative only

Indicates space is already tenanted

# Level 2- Full floor lease

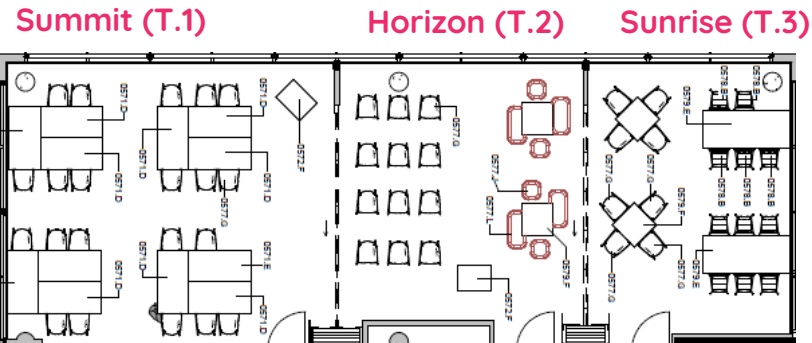
- 700m2 (approx.)
- Warm shell
  - ceiling grid, carpet tiles, perimeter plasterboard and glazing
- Balcony (exclusive use)
- Bathrooms (exclusive use)
- Fitout opportunity from May/June 2026
- Occupancy from July 2026



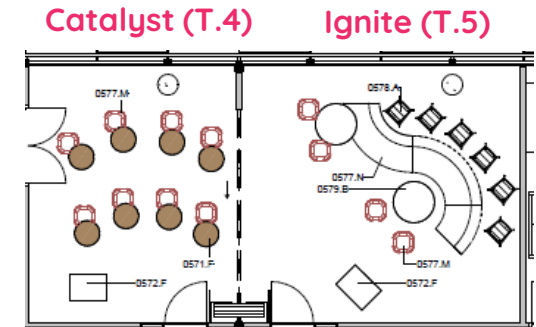
# Bookable spaces- event and training

Name	Detail	Size m2	Capacity	Per hr	Per day
<b>Gondwana Room</b>	<p><b>Open plan event space</b> with a retractable wall for privacy. Light filled room surrounded by glass. Can be opened up into larger space.</p> <p>Newline 86" interactive display on mobile trolley, Click2Cast wireless sharing, Williams AV infrared hearing system, and wireless microphone system.</p>	29	<p>Varies</p> <p>Seated: 20 Standing: 50</p>	40	290
<b>Summit (T.1)</b>	<p><b>Training Room.</b> Large training space with light filled, glazing combined with block out blinds if required. Changeable configurations. Dimmable lights, interactive displays, ceiling and wireless microphones, assisted hearing systems. Dual mode wireless presentation.</p>	54	<p>Varies</p> <p>Table Seated: 25 +/-</p>	40	290
<b>Horizon (T.2)</b>	<p><b>Training Room.</b> Individual training room, or, moveable walls enables joining with Summit Room T.1 and Sunrise T.3. Large training space with light filled, glazing combined with block out blinds if required. Changeable configurations. Dimmable lights, interactive displays, ceiling and wireless microphones, assisted hearing systems. Dual mode wireless presentation.</p>	38	<p>Varies</p> <p>Table Seated: 20 +/-</p>	40	290
<b>Sunrise (T.3)</b>	<p><b>Training Room.</b> Individual training room, or, moveable walls enables joining with Summit Room T.1 and Horizon T.2. Large training space with light filled, glazing combined with block out blinds if required. Changeable configurations. Dimmable lights, interactive displays, ceiling and wireless microphones, assisted hearing systems. Dual mode wireless presentation.</p>	32	<p>Varies</p> <p>Table Seated: 15 +/-</p>	30	215
<b>Catalyst (T.4)</b>	<p><b>Training Room.</b> Exclusive training space perfect for smaller group meetings or bespoke training. Dimmable lights, interactive displays, ceiling and wireless microphones, assisted hearing systems. Wall mounted interactive touch display and AV conferencing.</p>	26	<p>Varies</p> <p>Table Seated: 10 +/-</p>	30	215
<b>Ignite (T.5)</b>	<p><b>Training Room.</b> Youth focused training room with high, low seating, block out blinds, dimmable lights, interactive displays, ceiling and wireless microphones, assisted hearing systems. Wall mounted interactive touch display and AV conferencing.</p>	34	<p>Varies</p> <p>Table Seated: 15 +/-</p>	30	215

# Bookable spaces- joined training rooms



● Meeting rooms can be joined to create large event spaces



Name	Detail	Size m2	Capacity	Per hr	Per day
<b>Summit (T.1) &amp; Horizon (T.2)</b>	Depending on availability of all rooms, rooms can be forward booked and joined together to create larger event spaces. Standing or sitting capacity will vary.	<b>92</b>	75 standing +/-	70	500
<b>Horizon (T.2) &amp; Sunrise (T.3)</b>		<b>70</b>	50 standing +/-	50	430
<b>Summit (T.1) &amp; Horizon (T.2) &amp; Sunrise (T.3)</b>	The largest space available in Logan Hub, by joining T1, T2, T3. A huge 124m2 is ideal for expos, large community events and large scale employment assessment days.	<b>124</b>	100 standing +/-	90	640
<b>Catalyst (T.4) &amp; Ignite (T.5)</b>		<b>60</b>	50 standing +/-	50	430

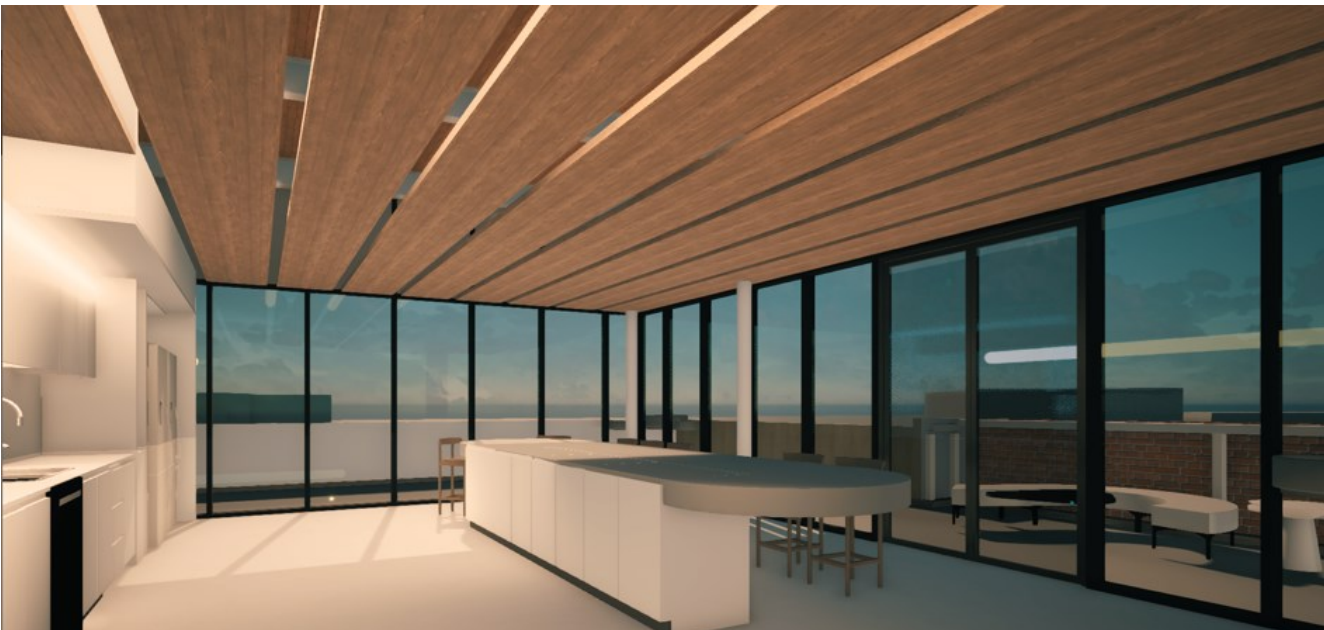
# Bookable spaces- rooms & offices

Name	Detail	Size m2	Capacity	Per hr	Per day	Per mnth
<b>Connect 1.1</b>	<b>Small office.</b> Flexible uses with capacity for 2-3 desk spaces, or 1 desk and a consult area with couch and small table. Can be furnished or empty. Visitor WIFI available.	14	4-5	20	150	1000
<b>Connect 1.2</b>	As above	14	4-5	20	150	1000
<b>Connect 1.3</b>	As above	14	4-5	20	150	1000
<b>Connect 1.4</b>	As above	14	4-5	20	150	1000
<b>Connect 1.5</b>	As above	14	4-5	20	150	1000
Connect 1.8	<b>Focus room.</b> Small focus room ideal for interviews, 1:1's , 2-3 people. Room is fitted with AV equipment wall mounted to facilitate video conferencing.	10	2-3	15	110	900
Connect 1.9	<b>As above</b>	10	2-3	15	110	900

# Bookable spaces- desks and coworking

Name	Detail	Size m2	Capacity	Per day	Per month
<b>Launchpad Co-working area</b>  <b>Desk (Hub Pod)</b>	<p>The Logan Hub has a variety of co-working spaces that are bookable for use by service providers, individuals such as entrepreneurs, or those simply wishing to work away from home in multi use vibrant co working space.</p> <p>On level 1 we have the “Launchpad” area designed to be a flexible co-working space.</p> <p>Approx 15 bookable desks, or hub pods, can be booked online, or via reception.</p> <p>Options include standing desk, couch, standard desk, or small group of desks.</p>	1	1	30	450

# The vision



# How could you be involved?

We're looking for passionate partners who want to:

## **Share the Space, Share the Impact**

- Deliver programs or co-locate services that strengthen our community
- Lease space for social impact-aligned enterprises
- Collaborate on funding opportunities and innovative projects

## **Build Your Future Workforce**

- Partner with us to create skilled talent pipelines. Think youth employment, training, and enterprises.
- Connect directly with emerging opportunities in one of Australia's fastest-growing regions

**Join us in helping to build Logan city into a vibrant and dynamic hub where individuals from diverse communities can connect, thrive and prosper.**

## **Expressions of Interest**

[ssi.org.au/logan-hub-commercial](https://ssi.org.au/logan-hub-commercial)

## **More information**

[ssi.org.au/our-services/communities/support-the-logan-hub](https://ssi.org.au/our-services/communities/support-the-logan-hub)

## **Contact**

[loganhub@ssi.org.au](mailto:loganhub@ssi.org.au)



Be part of  
something  
bigger ...

[ssi.org.au](http://ssi.org.au)