



Refugee Employment Support Program

Report Card: Year Two

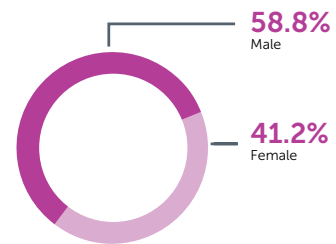
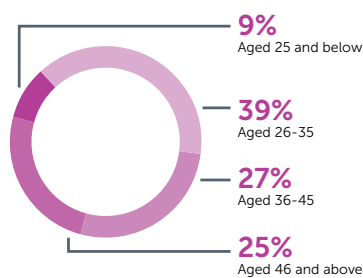
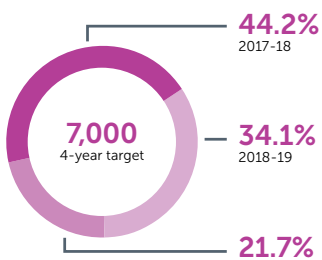
1 July 2018–30 June 2019

Our results

The Refugee Employment Support Program (RESP) is a four-year initiative of the NSW Government, managed by the NSW Department of Education. RESP addresses the challenges that are experienced by refugees and people seeking asylum in finding long-term skilled employment opportunities. Now in its second year of delivery, the RESP has achieved the following results:

5482 clients

(3,094 clients in 2017-18, and 2,388 in 2018-19) have registered with the RESP and undergone an intensive screening and assessment process and are achieving outcomes



1727 vocational training and further education programs have been delivered

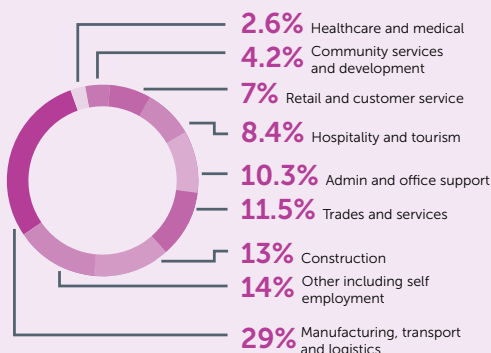
2665 participants have engaged in business skill development workshops

2051 participants have been supported to overcome a transport barrier to employment and education, including gaining their driving license or learning to navigate public transport

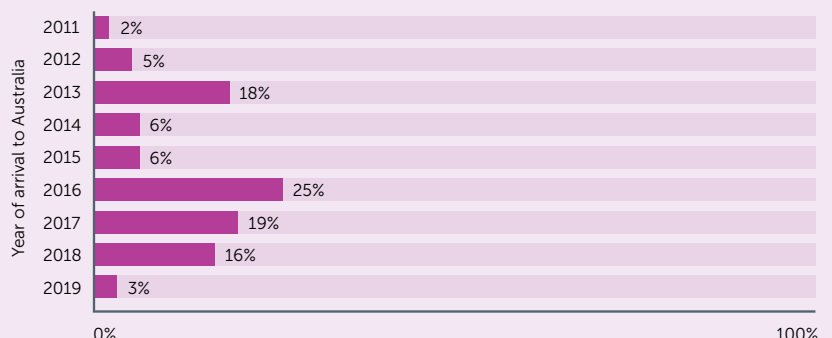
Over 900 participants have engaged in work experience to gain hands-on skills and industry exposure

6 delivery partners work with us in partnership to achieve this impact

1291 clients have secured paid employment. Of these:



Participants in the RESP have been in Australia for 1–8 years



The RESP is an innovative program leading the country in unlocking employment potential for refugees

QUICK FACTS

6.5 months

From the moment they make contact with the program, it takes a refugee job seeker who has found employment on average 6.5 months to secure a job.

41%

Of youth RESP participants have a job or are enrolled in education or training.

6 months

RESP female participants who have secured a job take **six months or less** on average, to gain employment after arrival.

1291

Is the number of RESP participants who have been employed since the inception of the program in June 2017 – almost 25% of people that engage with the program.

300+

Is the number of corporate, government and other partners, who over the past two years, have provided employment opportunities. We thank Allianz, The Bread and Butter Project, Fulton Hogan, Service NSW and Woolworths to name but a few.

Former civil engineer forges a new employment pathway

When Rania Shahoud, her husband and their two sons arrived in Australia in 2017 from Aleppo, Syria, she didn't know whether she'd ever find a job.

Despite family members being highly educated, each individual had to start their lives from scratch and embark on entirely new employment pathways.

Rania arrived in Australia with zero English language proficiency and sought a role that enables her to develop her language skills without a multiple-year, qualification recognition process.

Thanks to the NSW Government's Refugee Employment Support Program (RESP), Rania is now employed by social enterprise bakery The Bread and Butter Project.

Rania's job success has had a trickle-down effect on the rest of the family. Like his mother, Fawzi Shahoud also engaged with the program for tailored employment support and as a direct result now works with Transport NSW.



"The RESP has helped my family find jobs and be part of the community, and we are very happy."

Rania Shahoud

Background

The Refugee Employment Support Program (RESP) is a four-year \$22 million initiative by the NSW Government, managed by the NSW Department of Education. The RESP addresses the challenges that are experienced by refugees and people seeking asylum in finding long-term skilled employment opportunities.

The RESP is being delivered by Settlement Services International (SSI) on behalf of the NSW Government. It presents a new and innovative way to help refugees and people seeking asylum into work, by delivering a range of local support services that overcome the barriers they face in gaining employment.

The RESP involves six delivery partners and is supported by local employers, organisations, training providers, community groups and non-government organisations to connect eligible refugees and people seeking asylum with training, support and jobs.



To find out more or get involved in RESP contact the RESP Team at SSI:

+61 2 9600 3100 | kvluyn@ssi.org.au

Follow us on Twitter @SSI_tweets

Facebook @settlementservicesinternational/

www.ssi.org.au

[To be confirmed by Department of Education] © State of New South Wales through Department of Education 2019. You may copy, distribute and otherwise freely deal with this publication for any purpose, provided that you attribute the Department of Education as the owner. [Publication record to be confirmed by DoE]